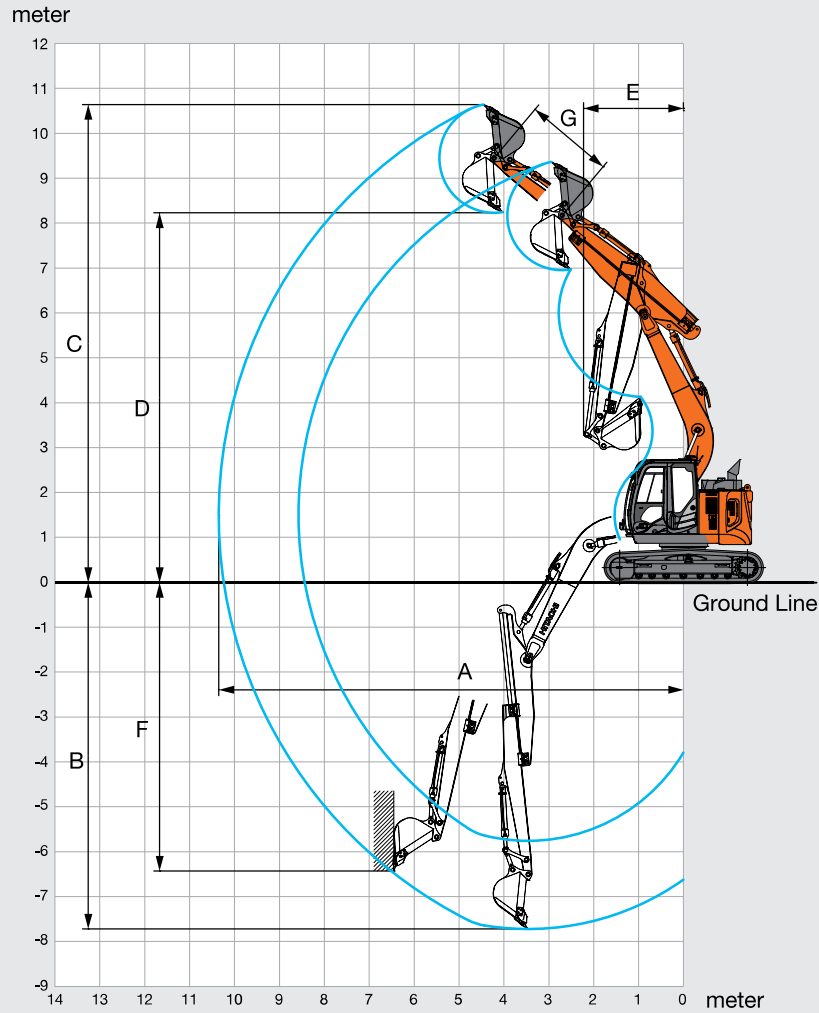


WORKING RANGES: MONOBLOCK BOOM



Unit: mm

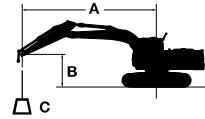
	ZAXIS 135US
	Monoblock boom
Arm length	4.84 m (Sliding maximum)
A Max. digging reach	10 450
B Max. digging depth	7 790
C Max. cutting height	10 750
D Max. dumping height	8 310
E Min. swing radius	2 250
F Max. vertical wall digging depth	6 490
G Slide stroke	2 000

Excluding track shoe lug

LIFTING CAPACITIES



- Notes: 1. Ratings are based on ISO 10567.
 2. Lifting capacity does not exceed 75% of tipping load with the machine on firm, level ground or 87% full hydraulic capacity.
 3. The load point is the center-line of the bucket pivot mounting pin on the arm.
 4. *Indicates load limited by hydraulic capacity.
 5. 0 m = Ground.
 6. Never attempt to carry out lifting operation with extending the sliding arm.
- For lifting capacities, subtract bucket and quick hitch weight from lifting capacities.



A: Load radius
 B: Load point height
 C: Lifting capacity

ZAXIS 135US MONOBLOCK BOOM

Rating over-front Rating over-side or 360 degrees Unit : kg

Conditions	Load point height m	Load radius										At max. reach		
		1.5 m		3.0 m		4.5 m		6.0 m		7.5 m				meter
Boom 4.60 m	6.0					*2 870	*2 870					*2 140	*2 140	5.86
Sliding arm 2.84 m	4.5					*3 070	*3 070	*2 920	2 230			*1 990	1 750	6.78
(minimum reach)	3.0			*5 070	*5 070	*3 730	3 400	*3 150	2 100			*1 970	1 470	7.27
Counterweight 4 300 kg	1.5			*7 310	5 500	*4 550	3 010	3 040	1 930			*2 070	1 350	7.43
Shoe 500 mm	0 (Ground)			*6 730	4 970	4 480	2 720	2 900	1 790			2 190	1 350	7.26
	-1.5			*7 770	4 900	4 360	2 620	2 840	1 740			2 420	1 490	6.76
	-3.0	*7 750	*7 750	*6 500	5 060	*4 400	2 680					*3 000	1 900	5.83
	-4.5			*3 830	*3 830									